

Water Tank 2.1

Quick Start Guide



For indoor use only



For humid environments, additional IP68 protection is needed

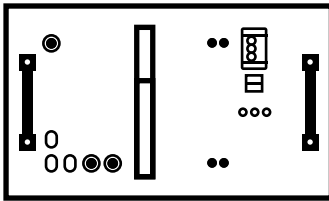


Regularly check all parts for damage

1 Download the owner's manual



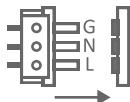
All information about Enapter devices can be found at handbook.enapter.com.
For support, write to support@enapter.com



2 Make Sure All Pipes and Wires Are Connected

All connection guides can be found in the owners's manual. Check the correct connection of the device before turning it on.

- ✓ Plastic pipes are connected to the ports labelled **H2O IN**, **H2O OUT**, and **OVERFILL** according to the owners's manual.
- ✓ **H2O IN port** must be connected to a **water purification system**, or any other source of deionised water.
The water conductivity must not exceed 20 µS/cm.
- ✓ **H2O OUT port** must be connected to the Enapter Electrolyser.
- ✓ Plug the power cable into **THE POWER PORT**.
Make sure the electrical ground is at the top.

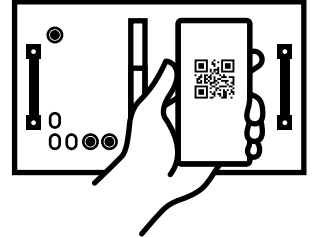


3 Follow the Enapter App Instructions to Connect the Device to Enapter Cloud





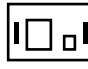


To download the app, scan the QR-code with your Android or Apple mobile phone or visit app.enapter.com

- Open the Enapter App and create an **account**.
- Follow the steps to create a **site**.
- Press the **add device** button.
- Scan QR-code located on the front side of the device.
- If you can't scan the QR code, enter the device ID and PIN manually. You can find them on the back of the device.



4 First water refilling

-  If all the pipes are correctly connected, **switch on** the machine: the tank will start filling immediately. If this does not occur, ensure the **OVERFILL** line is not obstructed.
-  The yellow & green LEDs will blink sequentially the maximum level (38L) is reached.
-  The tank will automatically stop refilling when the maximum level (38L) is reached. **If a manual refilling is needed please, refer to owner's manual.**
-  Monitor refilling level on the device dashboard.
-  If the Electrolysers require water, the machine will start automatically once the **medium level** is reached.

5 Water Tank is Ready For Use!

During normal operation, the LEDs indicate the status of the machine. Visit handbook.enapter.com to learn more. Monitor device activity in **Enapter app** or **Enapter Cloud**.



Alternating current voltage of 110-240 V is potentially lethal! Installation should be performed only with a disconnected power supply!