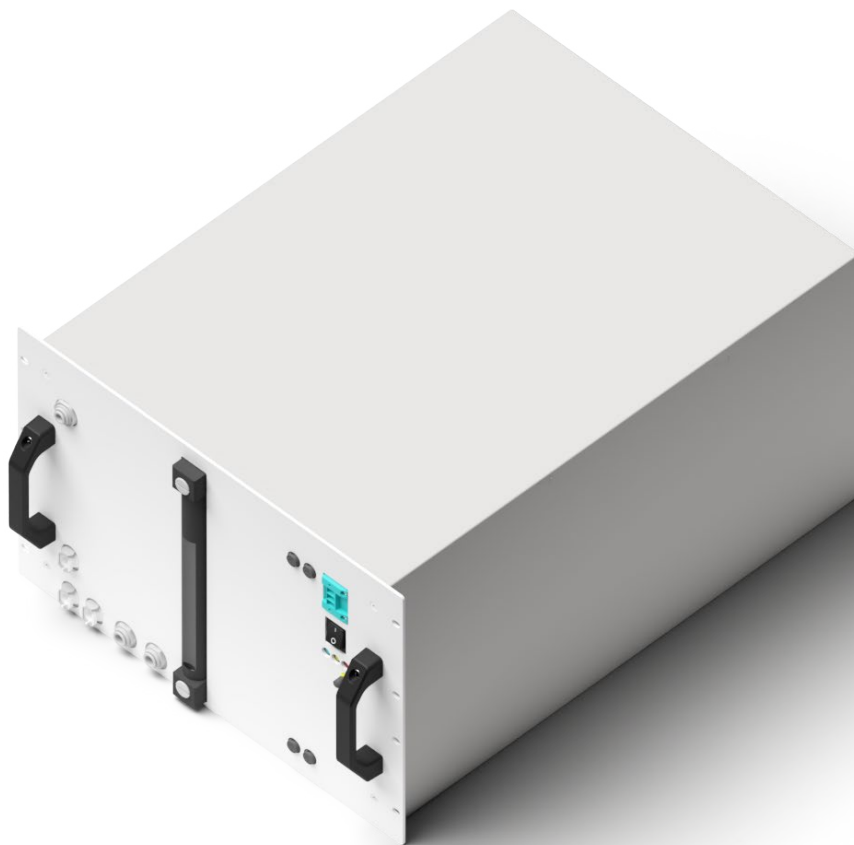


Water Tank Module

WTM 2.1



Enapter's Water Tank provides storage for 38 litres of clean water for the AEM Electrolyser. The water tank is rack mountable into a standard 19" cabinet. The tank contains a conductivity sensor and a pump system to supply up to 11 AEM Electrolysers with clean water.

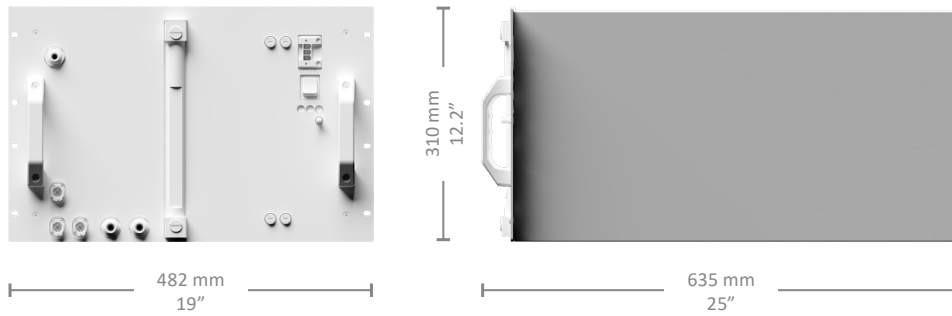
- ≡ High efficiency
- ≡ Control of water input conductivity
- ≡ Automated & remote operation with Enapter's Energy Management System
- ≡ Low requirements for input water purity
- ≡ Ideal for on-site hydrogen production systems
- ≡ Modules can be easily integrated in 19" racks
- ≡ Safe operation
- ≡ Scalable and modular, add as many modules as needed
- ≡ Quick and easy installation
- ≡ Low maintenance requirements
- ≡ Small footprint thanks to compact design



Water Tank Module WTM 2.1
www.enapter.com/water-tank

Specifications

Enapter
Water Tank Module WTM 2.1



Capacity	38.5 L (101.7 gal)
Output pressure	Up to 2.75 barg (up to 40 psig) ¹
Operative power consumption	35 W
Stand-by power consumption	3 W
Power supply	AC 110 – 240 V, 50/60 Hz
Ambient operative temperature range	5 – 45 °C (41 – 113 °F)
Ambient operative humidity range	20 – 95% Rh
IP rating	IP 20
Control and monitoring	Fully automatic with Enapter’s EMS
Maximum water input conductivity	< 5µS/cm at 25 °C (at 77 °F)
Water input pressure range	0 – 6 barg (0 – 87 psig)
Max outlet flow rate	3.8 L/min (10 gal/min)
Water inlet flow requirement	> 0.28 L/min (> 7.4 gal/min)
Weight (without water)	23 kg (51 lbs)
Weight (with water)	62 kg (137 lbs)
Dimensions (W × D × H)	482 × 643 × 310 mm (19” × 25” × 12.2”)
Space inside cabinet	7 U
Maintenance	If in use, the water tank is maintenance-free. After any period without use exceeding 1 month, the tank must be drained and washed before continuing usage.
Recommended number of AEM Electrolysers to be supplied	Up to 11

¹ Internal demand pump: pressure switch setting at 2.75 barg



Water Tank Module WTM 2.1
www.enapter.com/water-tank